

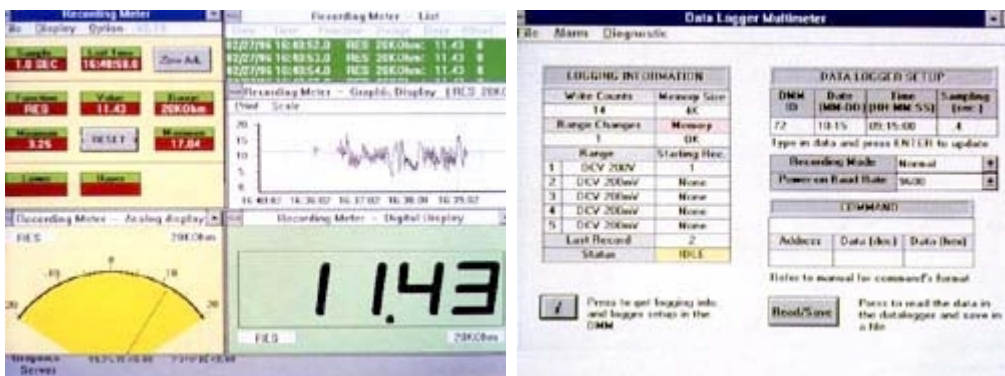
Datalogger Multimeter (RS-232)

MODEL TES-2732

- DMM talks with P.C. via RS-232 interface
- Data Logger function
- Direct input of V, A, Ohm, Hz, Cx & °C/°F without any further signal modification



TES-2732



Specifications for TES-2732

Voltage (AC/DC)

Range: 200m/2/20/200/750(AC)/1000V(DC)
 Accuracy: DC - (0.5% rdg + 1 dgt)
 AC - (1.0% rdg + 5 dgts)
 Resolution: 0.1m

Input Impedance: 10MΩ
 Overload Protection: 600Vrms

Resistance (Ω)

Range: 200/2K/20K/200K/2M/20M
 Accuracy: 0.8% rdg + 2 dgts
 Resolution: 0.1Ω
 Overload Protection: 600Vrms
 Max. Open Circuit Voltage: 3.2V
 Max. Allowable Applied Voltage: 500Vrms

Current (AC/DC)

Range: 200μ/2m/20m/200m/20A (AC/DC)
 Accuracy: DC - (1.0% rdg + 1dgt)
 AC - (1.2% rdg + 3dgts)
 Resolution: 0.1μA
 Burden Voltage: 0.35V
 Overload Protection:
 0.5A/250V Fast Blow Fuse & Diode 20A/380V

Capacitance (F)

Range: 2000p/200n/2μ/20μF
 Accuracy: 3% rdg + 10 dgts
 Test Frequency: 400Hz
 Data logger function for TES-2732 only

Continuity Beeper:

Operation Resistance: Below 30Ω
 Max. Open Circuit Voltage: 3.2V

Diode Test:

Resolution: 1mV
 Accuracy: 2% rdg +2 dgts
 Max. Test Current: 1.0mA
 Max. Open Circuit Voltage: 3.2V

Frequency (Hz)

Test Range: 10Hz to 20MHz (Auto Range)
 Range: 2K/20K/200K/2M/20MHz
 Resolution: 1 Hz
 Accuracy: 0.5% rdg + 2 dgts
 Input Sensitivity: 100mV
 Max. Allowable Applied Voltage: 600Vrms.

Temperature:

Range: -50°C to 1370°C
 -50°F to 1999°F
 Resolution: 0.1°C & 0.1°F
 Sensor: "K" type

Display:

3-1/2 Digital LCD Display
 Maximum Reading 1999
 Sampling Rate: 2.5 readings per second

Operation/Storage Condition:

0°C to 40°C < 80% R.H.
 -10°C to 60°C < 70% R.H.
 Power Source: one 9V Battery

Size & Weight:

180mm(L) x 82mm(W) x 38mm(H) & 365g
 Accessories:
 Test leads, Spare Fuse, Battery,
 Operation Instruction,
 Optional rubber holster,
 Connecting Cable & Software
 disc for TES-2730/2732